

Operating table RiEye Mk2S Accessories



RiEye Mk2S

Rini's operating tables in the "RiEye"-series are popular for microsurgery in both in stationary use and in "roll-in roll-out" operation. They are easy to handle and have many useful accessories. The stable construction is ergonomically designed to provide a high level of comfort, both for the patient and medical personnel

RiEye Mk2S comes in three different base models;



R5 model enables the patient to sit down or stand up from the front of the operating table



R6 is popular for cataract surgery, IVT eye injections, plastic surgery and similar microsurgical procedures



R7 operating table is suited for hospitals and clinics where surgeries under full anaesthesia are performed

GENERAL

Two column electrical system with adaptive chassis

Weight of base unit	95kg /209lb	Model R5 length	1700-1940mm/67-76in
Lifting capacity patient	300kg/661lb	Model R6 length	1790-2030mm/70-80in
Power system	Battery	Model R7 length	1960-2200mm/77-87in
External charger	110-240V	Footprint wheelbase length x width	800 x 600mm/31-23in
Height	500-900mm/19-35in	Cushion width	580mm/23in
Height with reverse Trendelenburg	550-950mm/21-37in	Cushion width extra wide	680mm/27in

COLORS



RiEye Mk2S accessories

There are a variety of accessories that have been developed in close cooperation with hospitals and clinics. These enable optimization of different treatment methods and provide an ergonomic and comfortable working environment. Last but not least, they also contribute to provide maximum safety and comfort for the patient.

HEADRESTS AND HEADREST ACCESSORIES

Doublelink Bowl headrest included in the RiEye

Keeps the head comfortably fixed and is especially suitable for eye surgery



140-00270-00 Headrest X-tray
Large tray with various pillows



140-00270-01 Pillow for X-tray black
Soft memory foam, allowing flexible head position



140-00270-02 Pillow for X-Tray grey
Moulded, cupped shaped soft pillow keeps the head comfortably fixed



140-00252-05 Headrest FaceDown/FaceUp
Tray that allows the patient to lie on the stomach or the back



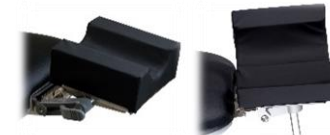
140-00270-06 Pillow for FaceDown/FaceUp
Moulded, soft pillow both for facedown or faceup surgeries



140-00270-03 Headrest S-tray
Small tray with various pillows



140-00270-04 Pillow for S-tray
Soft memory foam, good for when the head is tilted to the side



140-00270-14 Pillow for S-tray, U-shaped
Soft memory foam, with firmer sides for a comfortable fixed head position



140-00270-07 Headrest One grip
Tiltable headrest with seamless adjustment in angle, lateral tilt. With a quicklock to change between different headrests



140-00270-08 Luigi headrest with pillows, for One grip headrest
With multiple replaceable cushions in different thickness/firmness



140-00270-09 S-tray, for onegrip
Small tray for various pillows. The pillows are attached with velcro



140-00229-01 electrical headrest for Doublelink
Gives the surgeon the possibility to adjust the headrests angle by the hand- or foot control. For both standard and optional headrests. Can't be retrofitted



140-00242-01 Wrist support Bowl / S-Tray for Doublelink
140-00242-02 Wrist support X-Tray for Doublelink
Provides relief for the surgeon near the patient's head. Foldable and adjustable in height and length. Can easily be mounted and removed if required



140-00235-02 Accessory rail for X-tray
For when accessories will be mounted on the headrest, such as wrist support



140-03420-00 Bowl headrest (standard) with foundation to make headrest dockable
Complete headrest foundation with Easy fix headrest (or the ordered headrest), when multiple headrests can be used on the same table

HAND CONTROL HOLDER



140-00238-01 Flexible, bracket included

Rotatable on flexible bar and is mounted with clamping bracket on the wheel frame



140-00238-02 Fixed, bracket included

Fixed to bar and can be rotated and adjusted vertically



140-00238-03 Fixed for IV-pole, bracket included

Fixed on IV pole and can be rotated and adjusted vertically

FOOT CONTROL

With four functions: Height, backrest tilt, rotation and leg support tilt or electrical headrest (if electrical headrest option chosen). Allows the surgeon to make fine adjustments during surgery.



140-00230-01 Foot control with two joysticks movable tray

Placed on extendable tray or can be placed on the floor



140-00230-02 Foot control with two joysticks fixed tray, can't be combined with electric headrest

Placed on a fixed tray or on the floor. Tray is higher up than the movable tray to keep access when other pedals coming close



PERSONAL COMFORT



140-00261-01 Auto access to memory location

Makes the table go automatically to the desired position with one touch of button 1-4, Trend or Level-0.



140-00266-01 Electrical brake and direction control

Brake and direction control is operated by the hand control instead of the brake pedal, increases space next to the chassis. Can't be retrofitted



140-00352-00 Reverse Trendelenburg max 12°

The whole operating table can be tilted forward up to 12 degrees. Seat, leg and back can be individual adjusted while in Reverse Trendelenburg position. Can't be retrofitted

GENERAL ACCESSORIES



140-00236-02 Drape support, formable

Holds up the surgical drape from the patient.
Flexible rod that easily bends to the correct shape



140-00236-03 Drape support, formable with air tube connection

Holds up the surgical drape from the patient.
Flexible rod that easily bends to the correct shape. The nozzle can be rotated to the desired exhaust direction.



140-00235-00 Attachment rail for accessories on the seat 250mm/10in

Convenient if accessories need to be mounted by the seat. The attachment rail can be mounted on the right and / or left side of the seat



140-00235-01 Attachment rail for accessories on the seat 250mm/10in if Side rail is mounted

Convenient if accessories need to be mounted by the seat. The attachment rail can be mounted on the right and / or left side of the seat



140-00163-00 Anaesthesia armrest, clamp and arm strap included

Angle and inclination can be adjusted with a one-hand grip. Can be placed on the left or right side. The arm cushion can be removed for cleaning



140-00239-01 IV pole, bracket included

The IV pole is connected directly to the operating table and can be mounted on or off when needed. Can be placed on the right or left side of the operating table and can be raised and lowered with an ergonomic knob



140-00237-02 Battery lead (Standard)

140-00237-04 Battery Lithium iron.

Twice the number of operating cycles and half the weight of the standard, and a longer lifespan



140-00251-00 Leg cushion cover R6 R7

140-00251-01 Leg cushion cover R5

Protects against dirt from shoes. Extends the lifespan of the leg cushion



140-00351-00 Bracket for oxygen tank

Provides availability of oxygen when the operating table is mobile

Length of oxygen tank up to 800 mm/31in. Diameter of oxygen tank up to 120mm/5in. Weight of oxygen tank max 10 kg/22lb

PATIENT COMFORT



140-00350-01 Width extension back rest left

140-00350-00 Width extension back rest right

Improves patient comfort and supports their arms to be on the operating table and gives a more secure feeling



140-00232-00 Length extension back rest

120mm/5in

Length extension increases comfort for taller patients



140-00265-00 Leg support circular

Diameter 150mm/6in

Increased comfort for patients if their knees must come up higher



140-00265-01 Leg support half circular

200mm/8in high

TRANSPORT OF THE TABLE



140-00259-00 Driving handles backrest foldable R/L

The driving handles at the backrest fits all models of the operating table and are foldable



140-00256-00 Driving handles leg foldable R/L R6 and R7

Facilitates patient transport. The driving handles are foldable



140-00256-01 Driving handles leg R/L R5

For when the operating table is used as a mobile unit, or it generally needs to be moved

PATIENT SAFETY



140-00240-00 Side rail collapsible right side

140-00240-01 Side rail collapsible left side

Increased patient safety, especially when moving the operating table. Foldability enables the patient to sit down or stand up from the side of the operating table



140-00320-00 Armrest for Side rail collapsible

Improves comfort for the patient, mounted on the collapsible side rail



140-00240-02 Side rail right or left side 600mm/24in, 140-00235-00 included

Increased patient safety, especially when moving the operating table. Can be mounted on the right and / or left side. Large fixed side rail that is adjustable in height



140-00263-00 Belt waist

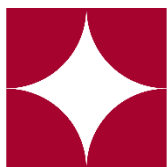


140-00263-01 Belt arm 700mm/28in



140-00263-02 Belt leg 2100mm/83in

Increases patient safety. Easy to install and remove. Wide belts with secure Velcro fastening



rini

Rini Ergoteknik AB
Fågelsångsvägen 3B
SE-186 42 Vallentuna
Sweden
Phone +46 8 594 77170
Email info@rini.se
www.rinicompany.com



rini
MedTech

Rini Medtech Inc
USA

Phone +1-331-230-6711
Email info@rinimedtech.com
www.rinimedtech.com

